

## 1125 Chobert

Aluminium - Dome head  
2.4 mm (3/32") - 6.4 mm (1/4")

### Features

- Consistent controlled clamp, ideal for soft or brittle materials
- Internally tapered bore ensures consistent light clamp to reduce potential damage to materials
- Expands radially during installation to ensure maximum hole fill
- Lower in-place costs than welding or nail rivets
- Ideal pivot pin or hose tail
- Can be bowl fed for larger volume applications using automated equipment

### Material

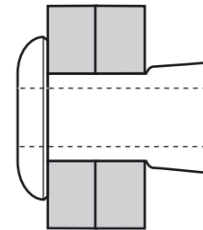
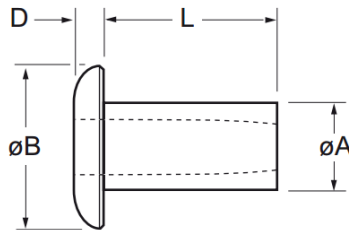
- Aluminium alloy, natural (2.5% Mg = **01125**, 3.5% Mg = **01131**)



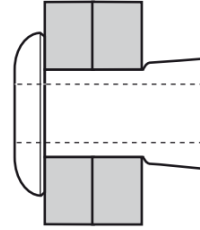
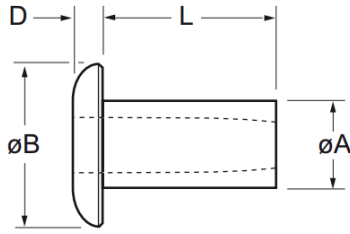
Other available options on request:

5% Mg - Replace part no. **01125** with **01135**

For assistance, contact your nearest [Gripwell](#) team



2.5% Mg Part No.	3.5% Mg Part No.	Size ø	Grip Range			Hole Size		øB max.	D max.	L ± 0.18	øA max.	Fasteners per pod ± 1
			nom.	min.	max.	min.	max.					
01125-00304	01131-00304	2.4 (3/32")		0.00	1.57	2.49	2.55	4.14	0.94	3.17	2.48	73
01125-00306	01131-00306			1.57	3.17					4.75		52
01125-00308	01131-00308			3.17	4.75					6.35		41
01125-00310	01131-00310			4.75	6.35					7.92		33
-	01131-00312			6.35	7.92					9.52		28
-	01131-00314			7.92	9.52					11.10		24
-	01131-00316			9.52	11.10					12.70		22
01125-00404	01131-00404	3.2 (1/8")		0.00	1.57	3.26	3.34	5.52	1.15	3.17	3.25	71
01125-00406	01131-00406			1.57	3.17					4.75		51
01125-00408	01131-00408			3.17	4.75					6.35		39
01125-00410	01131-00410			4.75	6.35					7.92		32
01125-00412	01131-00412			6.35	7.92					9.52		27
01125-00414	-			7.92	9.52					11.10		23



2.5% Mg Part No.	3.5% Mg Part No.	Size ø	Grip Range		Hole Size		øB max.	D max.	L ± 0.18	øA max.	Fasteners per pod ± 1
			nom.	min.	max.	min.					
01125-00506	01131-00506	4.0 (5/32")	1.57	3.17	4.09	4.17	6.53	1.48	4.75	4.06	47
01125-00508	01131-00508		3.17	4.75					6.35		38
01125-00510	01131-00510		4.75	6.35					7.92		31
01125-00512	01131-00512		6.35	7.92					9.52		27
01125-00514	01131-00514		7.92	9.52					11.10		23
01125-00516	01131-00516		9.52	11.10					12.70		21
01125-00518	01131-00518		11.10	12.70					14.40		-
01125-00520	01131-00520		12.70	14.27					16.00		-
-	001131-00605	4.8 (3/16")	0.00	1.57	4.85	4.93	8.92	1.81	3.96	4.82	50
01125-00607	01131-00607		1.57	3.17					5.56		38
01125-00609	01131-00609		3.17	4.75					7.14		33
01125-00611	01131-00611		4.75	6.35					8.74		28
01125-00613	01131-00613		6.35	7.92					10.31		24
01125-00615	01131-00615		7.92	9.52					11.91		21
01125-00617	01131-00617		9.52	11.10					13.49		19
01125-00619	01131-00619		11.10	12.70					15.09		17
-	01131-00809		6.4 (1/4")	3.17					4.75		6.35
-	01131-00811	4.75		6.35	8.74	27					
-	01131-00813	6.35		7.92	10.31	24					
-	01131-00815	7.92		9.52	11.91	21					
-	01131-00817	9.52		11.10	13.49	19					
-	01131-00819	11.10		12.70	15.09	17					
-	01131-00821	12.70		14.27	16.66	16					
-	01131-00823	14.27		15.87	18.26	14					
-	01131-00825	15.87		17.45	19.84	13					

Size ø	Shear kN	
nom.	1125 Series	1131 Series
2.4	0.30	0.50
3.2	0.60	0.80
4.0	1.00	1.60
4.8	1.50	2.00
6.4	-	2.70

### Assembly Applications

- Automotive
- Electronic components
- Sheet metal
- Electrical engineering
- Domestic appliances
- General light fabrication
- Injection moulded components



We are proud to be Avdel's authorized distributor of over 30 years